



Soundflex III is a premium acoustic lagging that has been developed to effectively reduce noise from hydraulic services whilst still being a pleasure to install.

It is a ultra-flexible composite product consisting of 3 layers. The highly dense and yet flexible mass layer is uniquely constructed using specialist fillers to provide excellent sound reduction properties, whilst the convoluted foam decouples the vibration path between the two substrates.

The external aluminium foil facing offers a fire resistant covering which increases the mechanical strength and provides an excellent surface to join adjacent sheets.

Soundflex III is fully compliant to Australian Standards and Building Code of Australia (BCA) requirements.

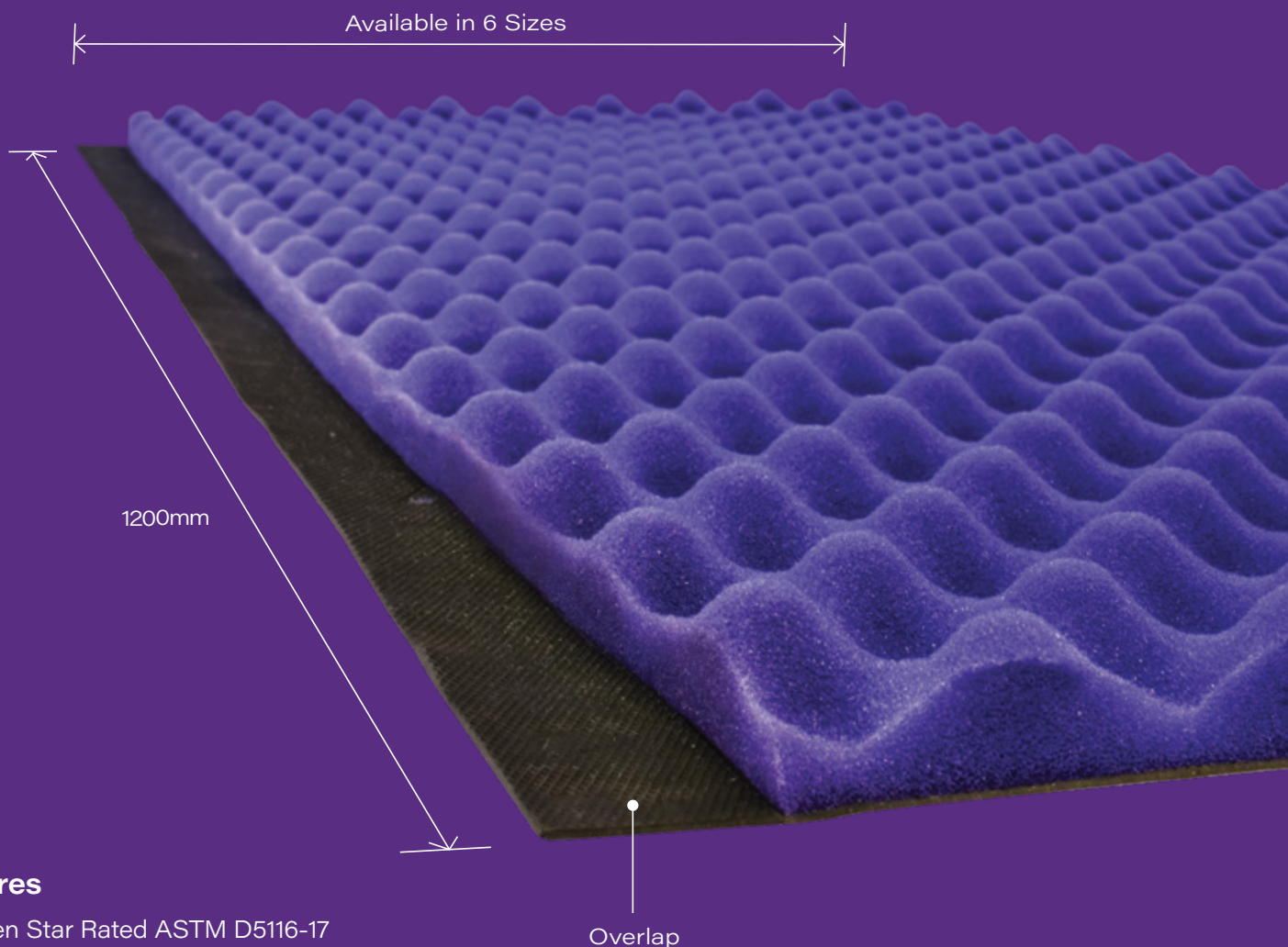
These easy to follow installation instructions will ensure significant noise reduction and maximum performance is achieved...

Soundflex III is unique ... just wrap and tape



Soundflex III has an exceedingly dense and mass layer providing maximum performance ensuring significant noise reduction. Defined high sound absorption & excellent acoustic performance combined with a compacted fire resistant covering, Soundflex III is the only product that is pre-cut so you simply wrap & tape.

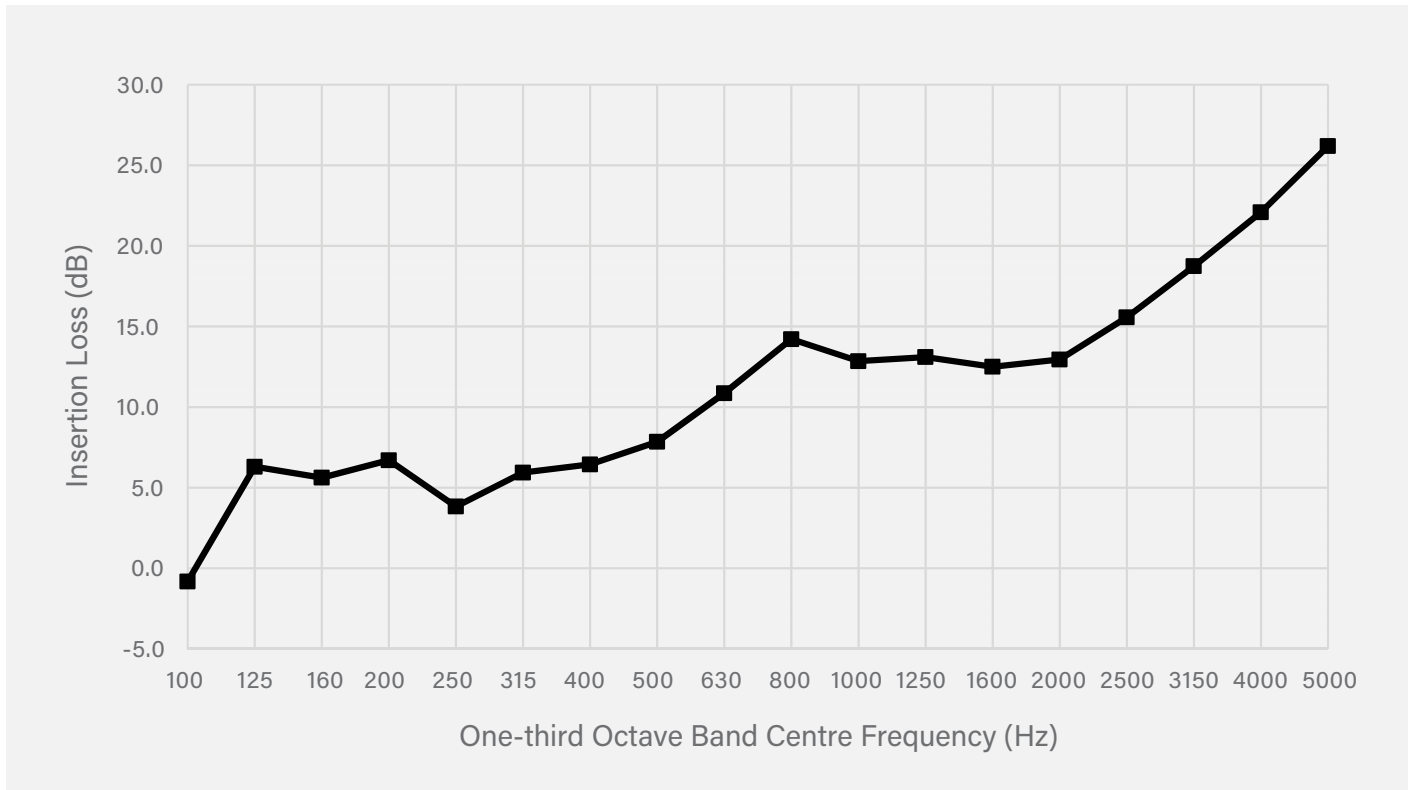
**Soundflex III is unique ...
just wrap and tape, Job Done.**



Features

- Green Star Rated ASTM D5116-17
- Odour free
- 5.4kg/ m2 mass loaded vinyl adhered to 25mm convoluted foam
- Contains no ozone depleting substances
- Fire Tested to AS 1530.3 with excellent flame resistance
- Independent Acoustic Test Report 6625-1.2R
- Complies with Building Code of Australia (BCA)
- Pre-cut for effortless installation

Insertion Loss (dB) of Soundflex III



Soundflex III Range

Code	Thickness	Description	Roll or Sheet Size	Suits	Pallet QTY	Operating Temp Range
50SFLEXIII300	27mm	Soundflex III Lagging 1200x300mm 50PVC	1200mm x 300mm	50PVC	240	-40 to 100°C
50SFLEXIII375	27mm	Soundflex III Lagging 1200x375mm 65PVC	1200mm x 375mm	65PVC	240	-40 to 100°C
50SFLEXIII500	27mm	Soundflex III Lagging 1200x500mm 100PVC	1200mm x 500mm	100PVC	160	-40 to 100°C
50SFLEXIII680	27mm	Soundflex III Lagging 1200x680mm 150PVC	1200mm x 680mm	150PVC	80	-40 to 100°C
50SFLEXIII123	27mm	Soundflex III Lagging 1200x3000mm Roll	1200mm x 3000mm	Roll	30	-40 to 100°C
50SFLEXIII6755	27mm	Soundflex III Lagging 600x5000mm Roll	600mm x 5000mm	Roll	40	-40 to 100°C

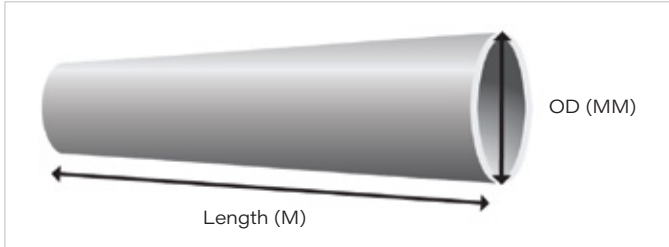
Material Properties

Product	Test Method	Property	Results	Range	Report
Soundflex III	AS/NZ 1530.3-1999	Ignitability Index	0	0-20	18-002767
Soundflex III	AS/NZ 1530.3-1999	Spread of Flame Index	0	0-10	18-002767
Soundflex III	AS/NZ 1530.3-1999	Heat Evolved Index	0	0-10	18-002767
Soundflex III	AS/NZ 1530.3-1999	Smoke Developed Index	5	0-10	18-002767
Soundflex III	ASTM D5116-17	TVOC Emission Rate	0.228 mg/m ² /hr	<0.5	CV250718

INSTALLATION STEPS



1. PRECUT



Measure the length and outer diameter (OD) of the pipe requiring lagging. To calculate the required width of pipe lagging, apply the formula below.

$$\text{Width} = \pi \times (\text{OD} + (2 \times T)) + \text{OL}$$

Where:

$$\pi = 3.14$$

OD = Outer diameter of pipe

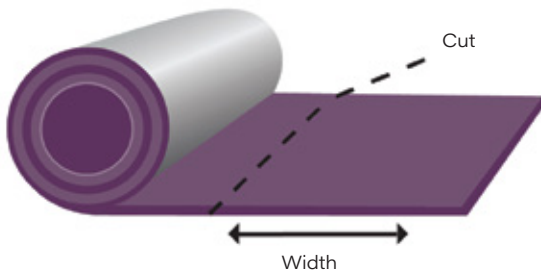
T = Thickness of pipe lagging

OL = Overlap (30mm)

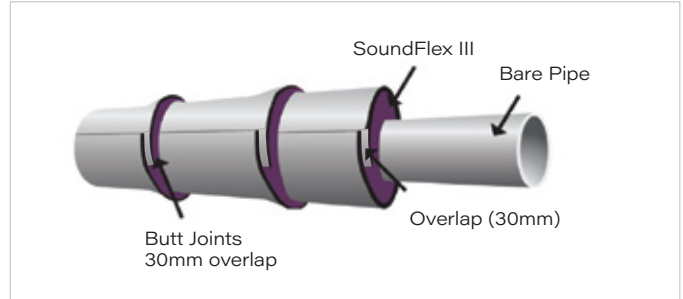
Example: For 100mm Pipe

$$W = 3.14 \times (100 + (2 \times 25)) + 30 = 501\text{mm}$$

Once the width is calculated, the pipe lagging can be easily cut with a sharp knife or scissors.

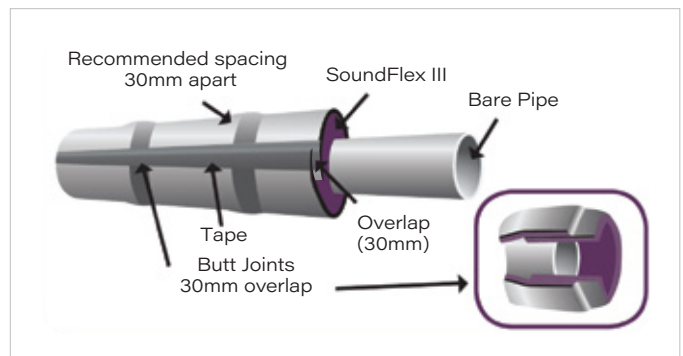


2. WRAP



Wrap lagging around the pipe ensuring a 30mm overlap. Each segment overlap by 30mm to ensure noise does not escape. A tight seal is vital for maximum performance.

3. TAPE



Tape all joints with an aluminium tape. Overlapping the lagging is very important as butt joining may result in performance loss.

Drillcut - Melbourne

15 Corporate Place
Broadmeadows
VIC 3047



SALES/SUPPORT
03 8301 9999

Drillcut - Sydney

Unit 14, Cumberland Green Estate
2-8 South Street
Rydalmere, NSW 2116



SALES/SUPPORT
02 9737 0099

Drillcut - Launceston

3/34 Innocent Street
Kings Meadows
TAS 7249



SALES/SUPPORT
03 6343 6484

Drillcut - Hobart

273d Kennedy Drive
Cambridge
TAS 7170



SALES/SUPPORT
03 6272 1190